

Installation Instructions

Tree Swing

Part # APo74



ID SCULPTURE

PLAY. CLIMB. EXPLORE.

591 South Boulevard Street

Gunnison, Colorado 81230

info@idsculpture.com

970-641-1747

Specifications: Tree Swing

- Material: Epoxy with Steel Frame
- Approximate Uninstalled Size: 12'-0" x 1'-8" x 9'-9" Tall
- Approximate Weight: 1,200 Lbs
- Swing Pivot Height: 7'-8" (assumes 1' of safety surfacing)
- Age Group: 2-5 Years Old

Required Parts (included):

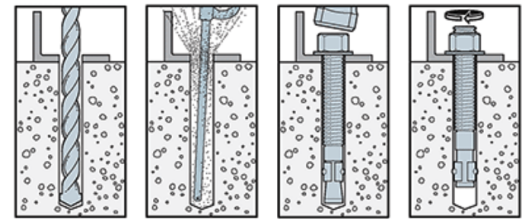
- Tree Swing Epoxy Sculpture
- Swing Beams: 2ct
- 5/8" x 8-1/2" SS Wedge Anchor: 8ct
- 1/2"-13 x 3/4" SS Button Head Security Screw: 4ct
- Security Key
- Swings and Hardware
- "Tree Swing" Drawing Set

Recommended Equipment (not included):

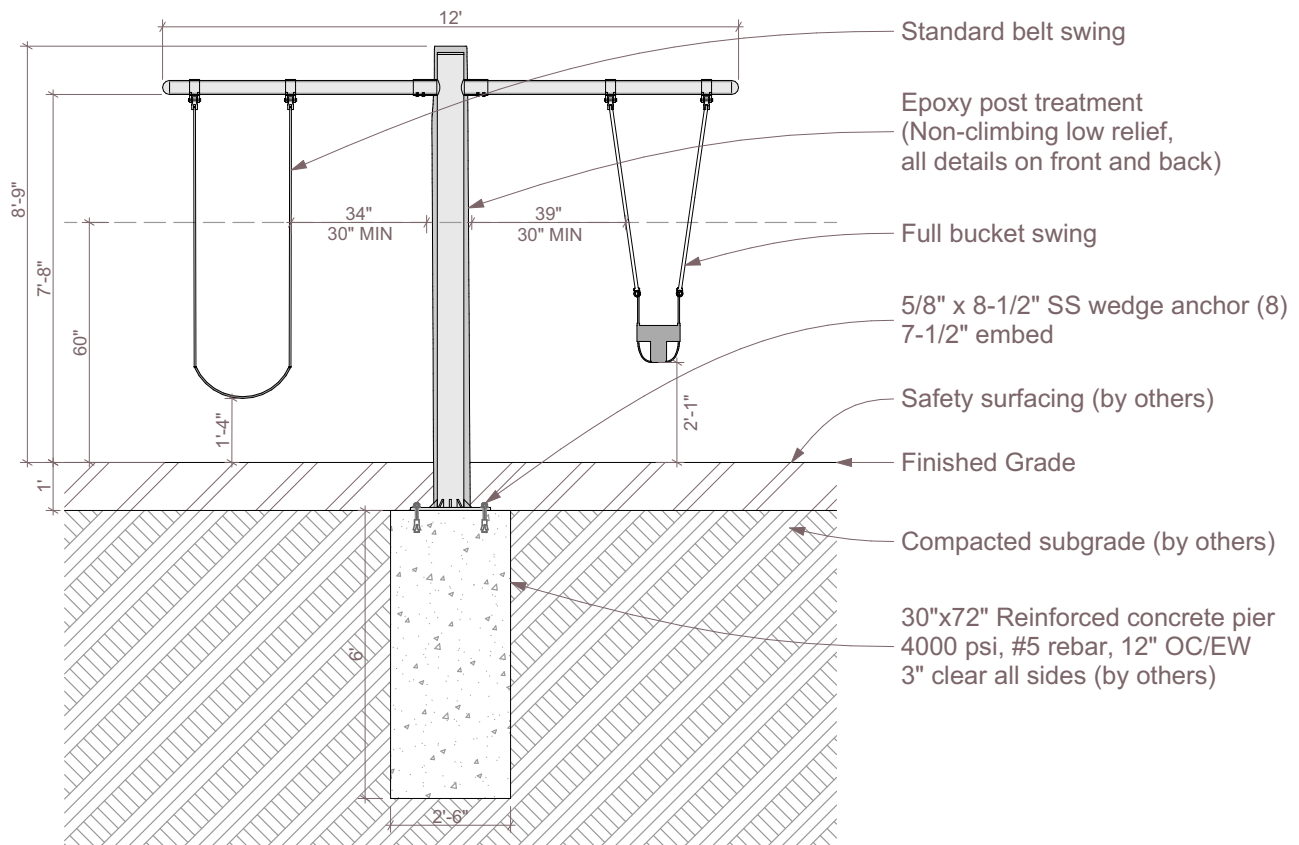
- Hammer Drill
- 5/8" x 10" concrete drill bit
- Hammer
- 15/16" Wrench
- 6' Lifting Straps: 2ct
- Large Adjustable Crescent Wrench
- Lift: Skid Steer, Reach Type Forklift 3,000 lb Capacity or Crane

Important Notes:

- *Warning: Installation over a hard surface such as asphalt, or packed earth may result in serious injury or death from falls.*
- *It is the responsibility of the installer to ensure all components are installed in compliance with ASTM F-1487.*
- *All site built footings should be allowed to cure for a minimum of 48 hours prior to installation.*



Typical Wedge Anchor Installation



Section

Installation Instructions

Tree Swing

Part # APo74

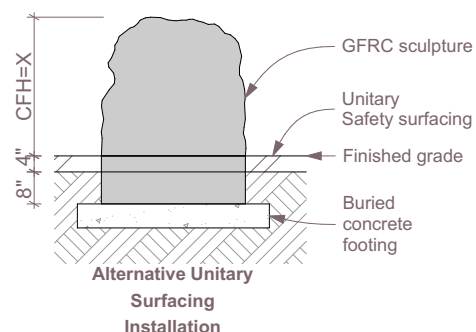
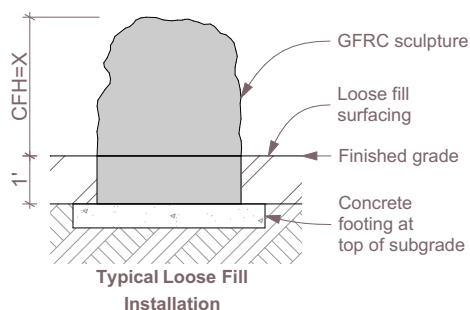


591 South Boulevard Street
Gunnison, Colorado 81230
info@idsculpture.com
970-641-1747

PRE-INSTALL CHECKLIST

Please review prior to ordering and installing ID Sculpture products.

- ☐ 1. Verify that you have the recommended lifting equipment to unload and install your component, as specified by the installation instructions. Please check the installation instructions for the weight of each component and shipping dimensions.
- ☐ 2. Develop a proper plan to access the site and control access prior to opening.
- ☐ 3. Call your local utilities to locate any potential existing below grade equipment?
- ☐ 4. FOR ALL SCULPTURES: Verify you have accounted for adjustments to the footing depth based on your choice of safety surfacing material. Footing depth must be adjusted to compensate for the depth/thickness requirements of the selected safety surfacing (*see diagrams below*). Layout drawings show the uninstalled dimensions of the component. If you require a modification to a standard component, please notify ID Sculpture when placing your order. *Additional charges may apply.*



*Critical Fall Height (CFH)

- ☐ 5. Verify that you have installed any required footings prior to the arrival of your sculptures. Please note, footings should be allowed to cure for a minimum of 7 days.

Important Safety Note:

Please install and maintain adequate protective surfacing under and around your equipment. Never let children play on the equipment before protective surfacing is installed. Please consult ASTM F1487 for more information.

Installation Instructions

Tree Swing

Part # APo74



591 South Boulevard Street
Gunnison, Colorado 81230
info@idsculpture.com
970-641-1747

Sculpture Installation:

1. Locate, excavate and pour the footer based on the provided layout plan drawing.
2. Disconnect the swing from shipping brace/pallet.
2. Make sure that the lifting straps are securely wrapped around the 3.5" schedule 40 pipe sleeve fittings on either side of the trunk.
3. Lift the sculpture using an appropriate skid steer, reach forklift or crane taking care to equalize the load on straps.
4. Set the piece in place on the poured footing and verify all use zones as required by ASTM 1487.
6. Drill through the holes in the mounting plates to a minimum depth of 7 1/2".
7. Install the stainless steel wedge anchors and tighten.
8. Insert each 3" schedule 80 pipe swing beam into the corresponding 3.5" schedule 40 pipe sleeve fittings at the top of the tree post. Be sure to align holes in beams with holes in fitting sleeves.
9. Install the provided 1/2"-13 x 3/4" SS button head security screws into the holes at the bottom of the sleeve fittings and into the swing beams and tighten.

Swing Connection

10. Connect the swing attachment shackles to the Tree Swing cross beam with provided hardware. Refer to the diagrams on the next page for shackle locations of each swing type.
11. Connect swing chain (4) to the swing attachment shackles with provided swing hangers (4).
12. Connect the swing chain (4) to the Belt Swing Seat and Full Bucket Swing Seat or ADA Inclusive Swing Seat with provided shackles (4).
13. Check that the swing height complies with ASTM 1487. Remove excess chain links if necessary.
14. Install resilient surfacing material in accordance with layout guide lines and ASTM standards.

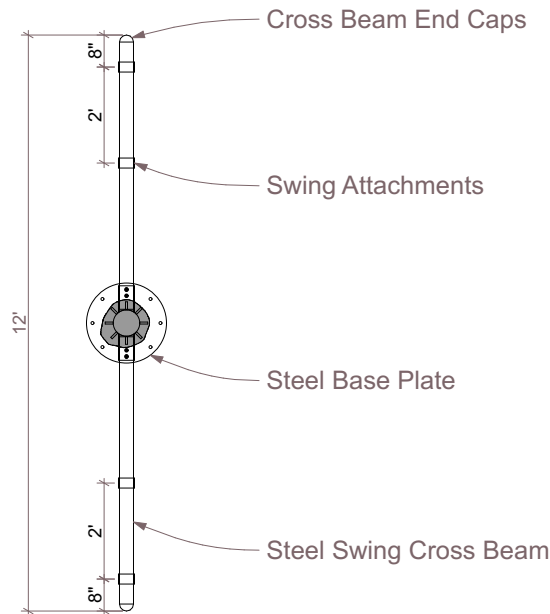
Installation Instructions

Tree Swing

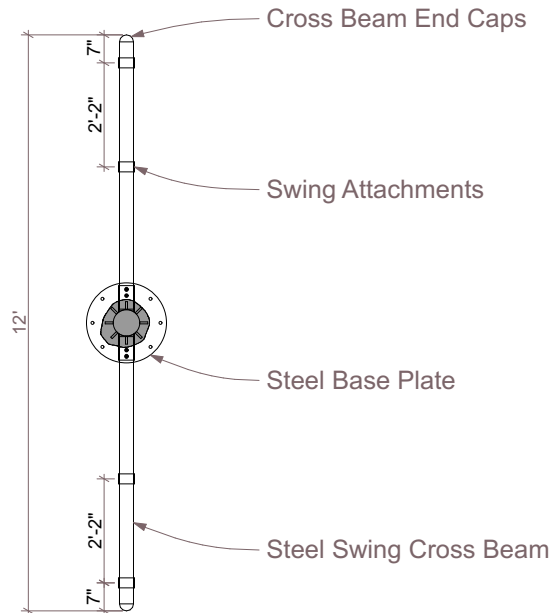
Part # APo74



591 South Boulevard Street
Gunnison, Colorado 81230
info@idsculpture.com
970-641-1747



Swing Attachment Shackle Locates - Full Bucket Swing Seat



Swing Attachment Shackle Locates - ADA Inclusive Swing Seat